

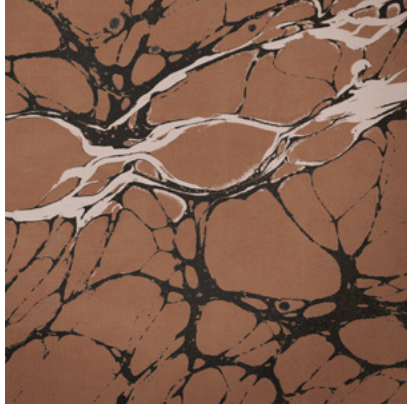
**Calico**

# NIGHT

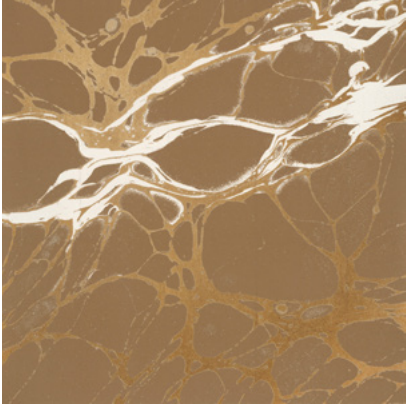
Tear Sheet



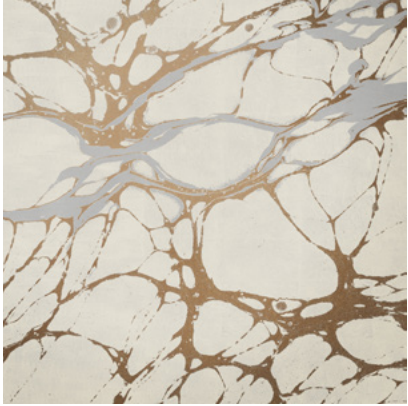
Night is an exploration of the duality of darkness and light.



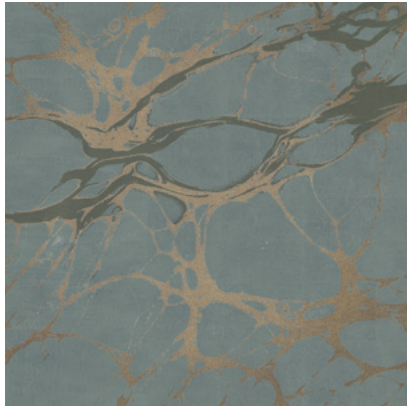
BRICK



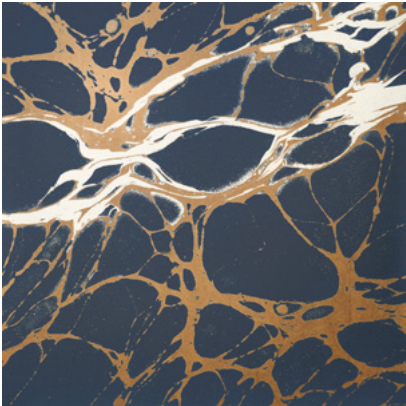
COPPER



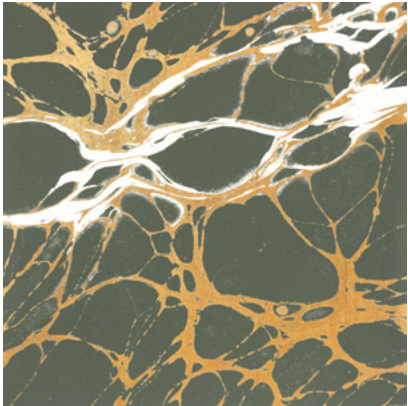
ECRU



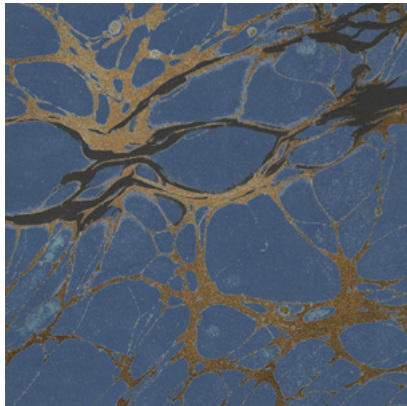
GLAZE



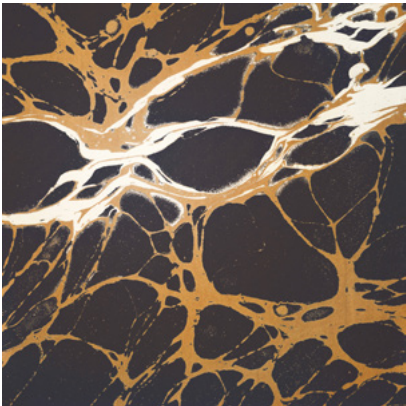
INDIGO



PERIDOT



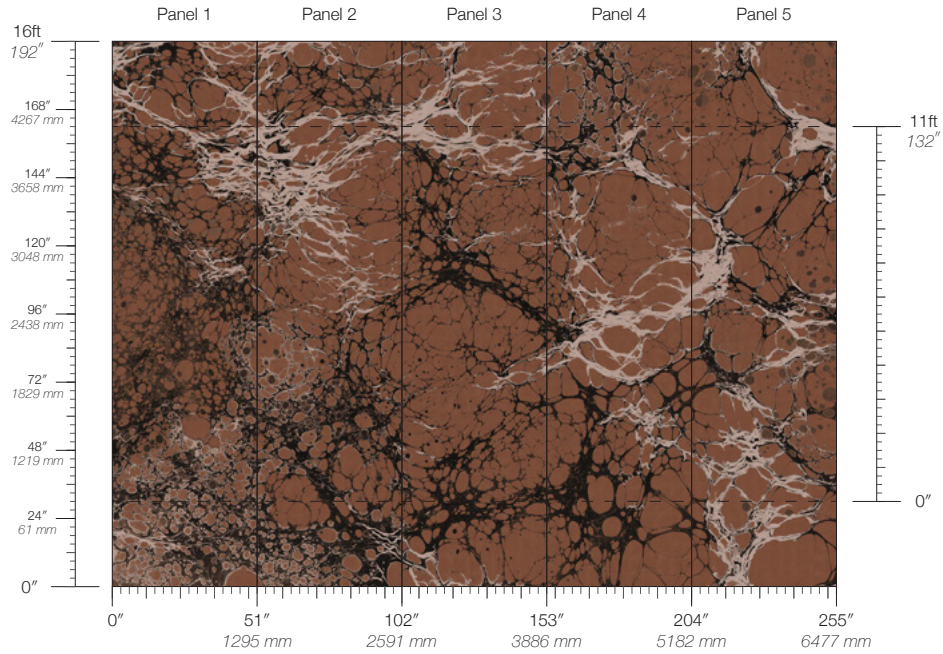
ROYAL



SLATE

# Night Brick

Suitable for residential and commercial projects



**COLOR**  
Brick

**STOCK**  
Made to order

**REPEAT**  
Non-repeating

**CONTACT**  
sales@calicowallpaper.com  
+1 718 243 1705  
57 Lispenard Street  
New York, NY 10013 USA

**ITEM**  
1614

**MINIMUM**  
1 panel

**LEAD TIME**  
4 weeks to print

**CONTENT**  
Type II Vinyl

**MAINTENANCE**  
Water-based cleanser

**ORIGIN**  
USA

**DISCLAIMER**  
Panel maps represent mural artwork only. Reference the physical sample for color and texture.

**PANEL WIDTH**  
51" / 1295 mm trimmed

**FLAMMABILITY**  
ASTM E84 Adhered Class A

**DETAILS**  
Custom options available

**PANEL HEIGHT**  
132" / 3353 mm standard  
192" / 4877 mm extended

**ENVIRONMENTAL**  
Recycled Content, Phthalate Free  
Low VOC, HPD Available

**PRICE**  
Available upon request